

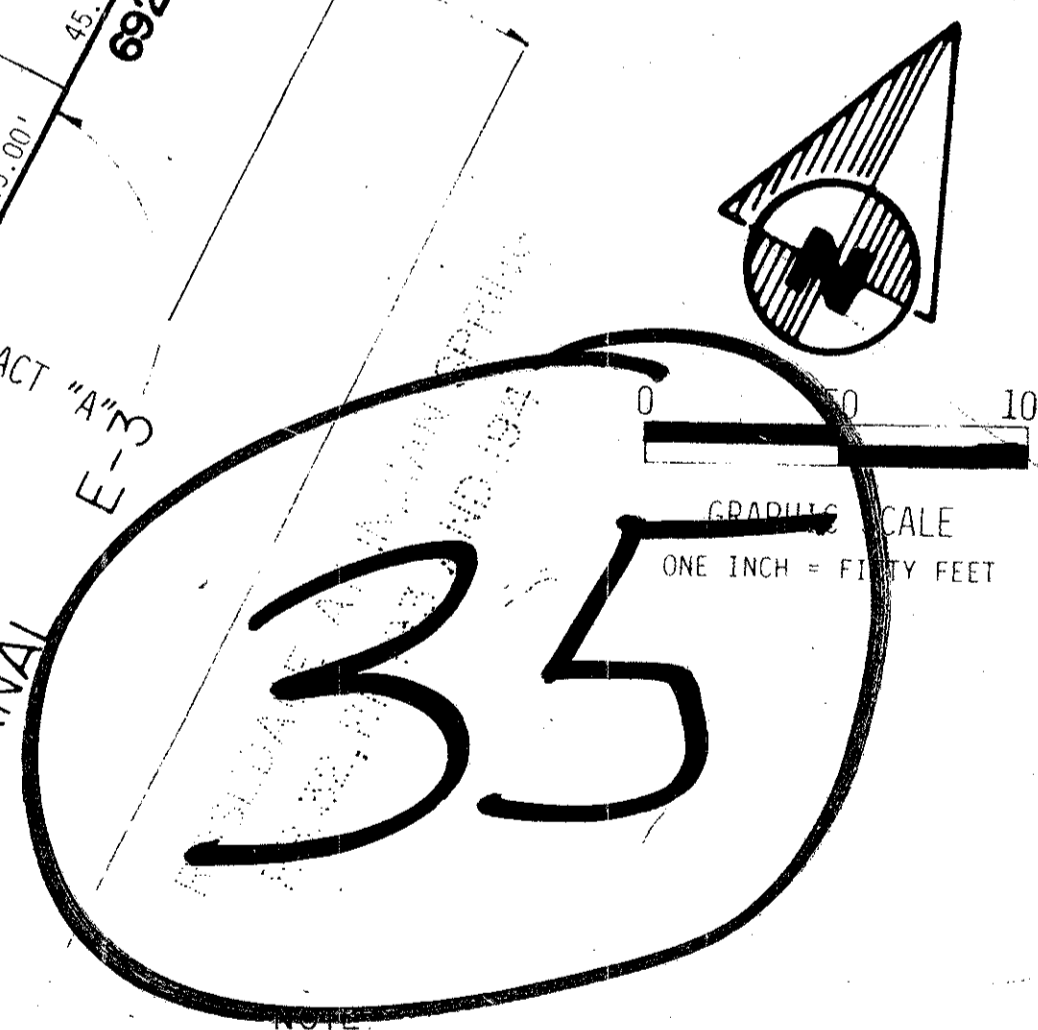
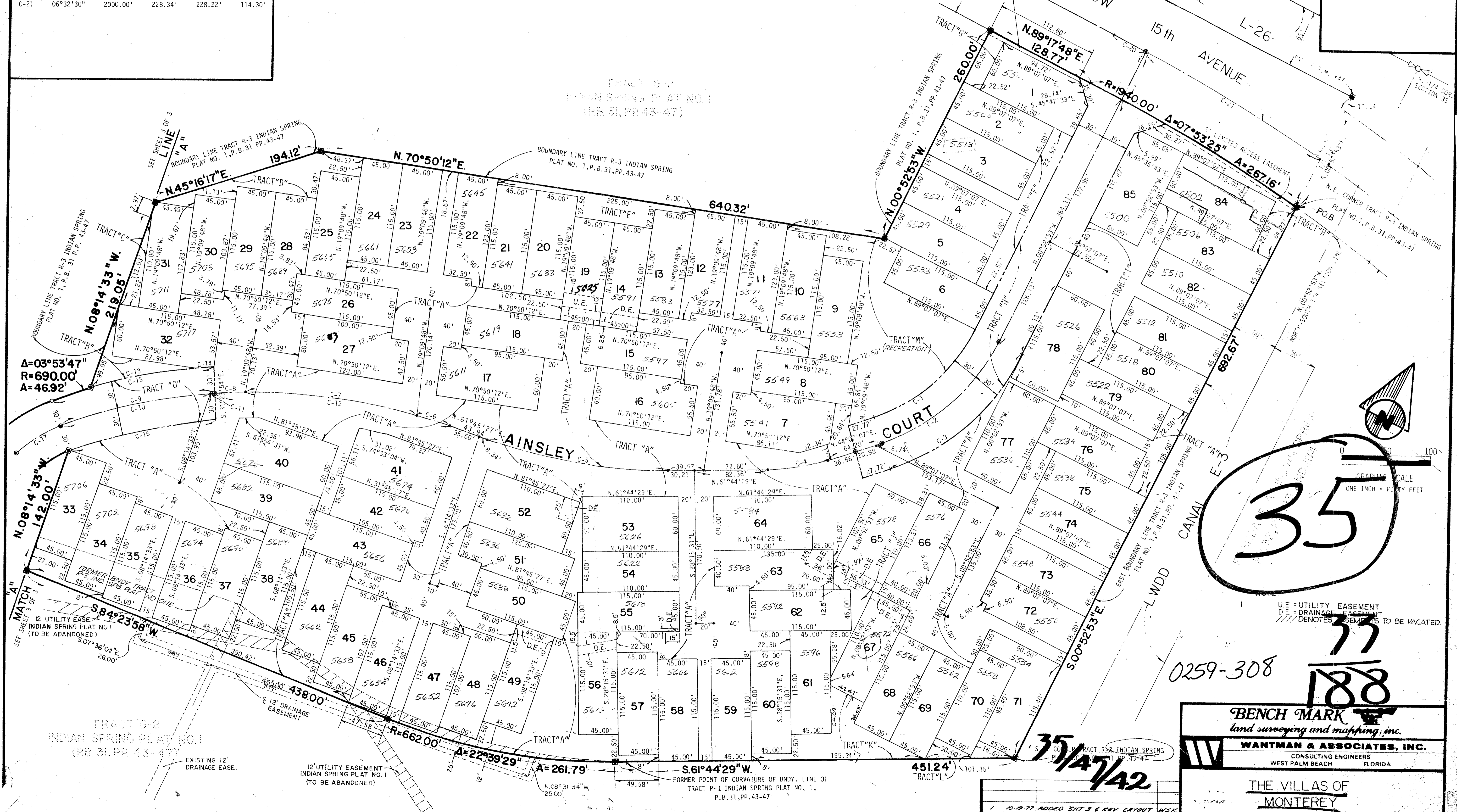
STATE OF FLORIDA
COUNTY OF PALM BEACH
THIS PLAT WAS FILED FOR
RECORD AT ... M.
THIS ... TH DAY OF ...
AD. 1977 AND DULY RE-
CORDED IN PLAT BOOK ...
ON PAGES ... AND ...
JOHN B. DUNKLE, CLERK
CIRCUIT COURT
BY ... DC

CURVE DATA

C. NO.	CENT. ANG.	RADIUS	ARC	CHORD	TANGENT
C-1	45°00'00"	195.00'	153.15'	149.25'	80.77'
C-2	45°00'00"	225.00'	176.72'	172.21'	93.20'
C-3	45°00'00"	255.00'	200.28'	195.17'	105.62'
C-4	17°37'22"	220.00'	67.67'	67.40'	34.10'
C-5	20°00'58"	600.00'	209.61'	208.54'	105.88'
C-6	03°25'08"	660.00'	39.38'	39.38'	19.70'
C-7	16°45'50"	660.00'	193.11'	192.42'	97.25'
C-8	02°58'23"	660.00'	34.25'	34.24'	17.13'
C-9	15°36'06"	660.00'	179.72'	179.17'	90.42'
C-10	15°08'30"	660.00'	174.42'	173.92'	87.72'
C-11	00°27'36"	660.00'	5.30'	5.30'	2.65'
C-12	23°09'21"	660.00'	266.74'	264.92'	135.21'
C-13	09°23'57"	690.00'	113.19'	113.06'	56.72'
C-14	02°18'23"	690.00'	27.77'	27.77'	13.89'
C-15	15°36'06"	690.00'	187.89'	187.31'	94.53'
C-16	15°36'06"	630.00'	171.55'	171.02'	86.31'
C-17	13°45'49"	150.00'	36.03'	35.95'	18.10'
C-18	32°42'59"	600.00'	342.61'	337.97'	176.12'
C-19	11°03'26"	420.00'	81.05'	80.93'	40.65'
C-20	01°06'18"	2000.00'	38.57'	38.57'	19.29'
C-21	06°32'30"	2000.00'	228.34'	228.22'	114.30'

A PLANNED UNIT DEVELOPMENT THE VILLAS OF MONTEREY AT INDIAN SPRING

A parcel of land in the Northwest one-quarter of
Section 35, Township 45 South, Range 42 East,
being a replat of tracts R-3, P-1, and a part of R-4, F-1 &
G-2, Indian Spring Plat No. 1, P.B. 31, PP. 43-47
Palm Beach County, Florida. August, 1977



0259-308

BENCH MARK
land surveying and mapping, inc.
WANTMAN & ASSOCIATES, INC.
CONSULTING ENGINEERS
WEST PALM BEACH, FLORIDA

THE VILLAS OF MONTEREY

NO.	DATE	DESCRIPTION	BY	DRAWN	FILED	DATE	JOB NO.	SHEET
1	10-19-77	ADDED SHT 3 & REV LAYOUT WSK		WSK	NO.	8/31/77	77-117	2
				DESIGNED	CHECKED	SCALE	DRAWING NO.	OF
				RJW	RJW	1"=50'		3

THIS INSTRUMENT WAS PREPARED BY ROBERT J. WHIDDEN IN THE OFFICES OF BENCH MARK LAND SURVEYING AND MAPPING, INC., 2300 PALM BEACH LAKES BOVD., SUITE 109, WEST PALM BEACH, FLORIDA. PHONE 689-2111.